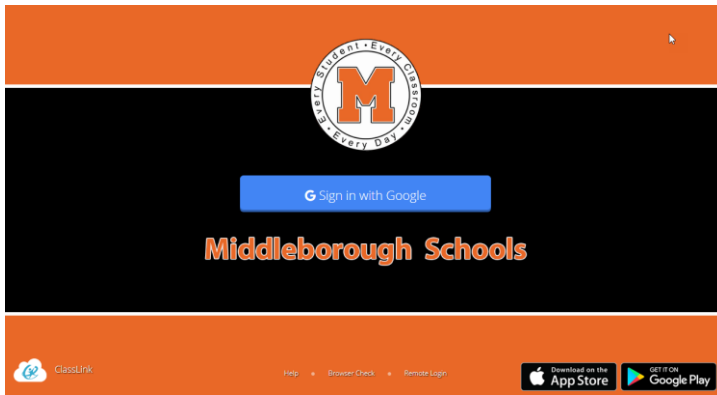


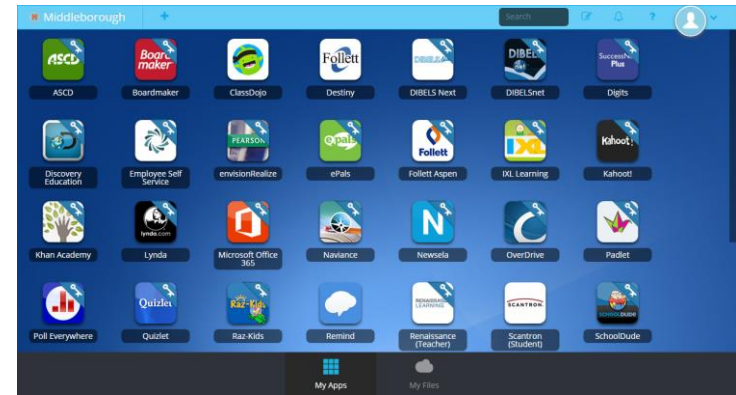
1. Sign In

Sign in by clicking 'Sign in with Google'.



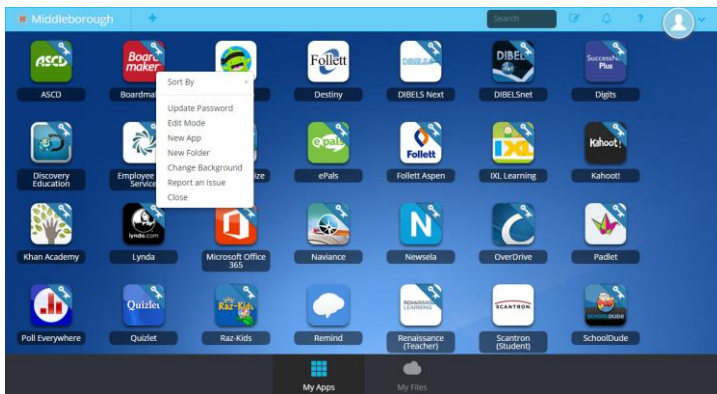
2. My Apps

The My Apps screen is where all of your online resources will be located. Enter your username and password once (if prompted) and ClassLink will remember it for you!



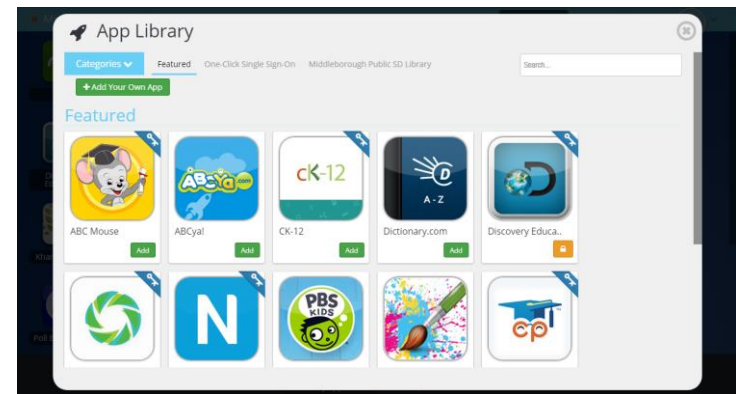
3. Update Password

Right click an app and choose 'Update Password' to update or change your stored username and passwords for your applications. This is if you have entered your username or password incorrectly or if something has changed/updated.



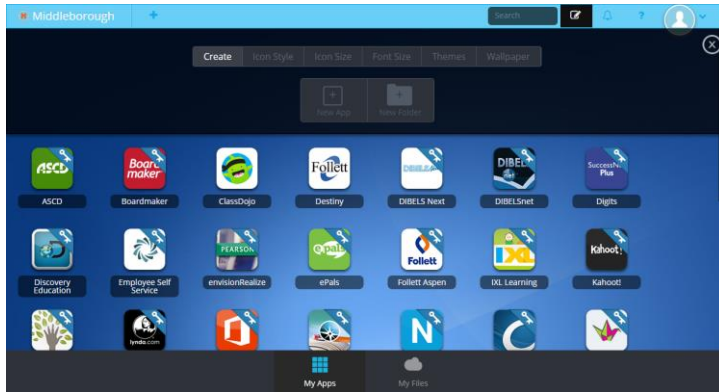
4. App Library

The library contains many educational resources to choose from. Click the Plus (+) on the top left of the My Apps screen. Click Add on any app to place it on your My Apps screen.



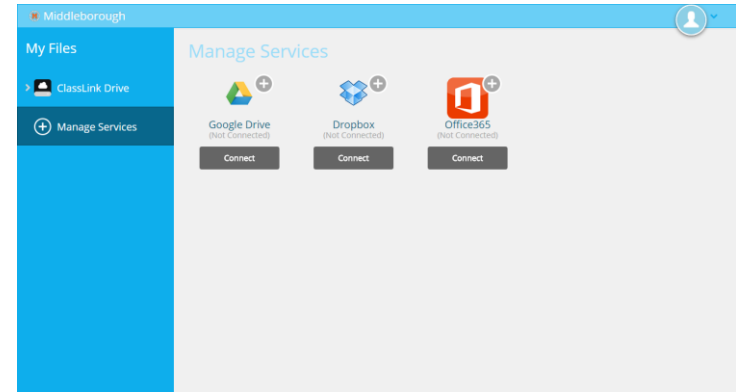
5. Edit Mode

To go into Edit Mode, click the paper and pencil symbol on the top right of your screen. While in Edit Mode, you can create folders and customize your My Apps screen.



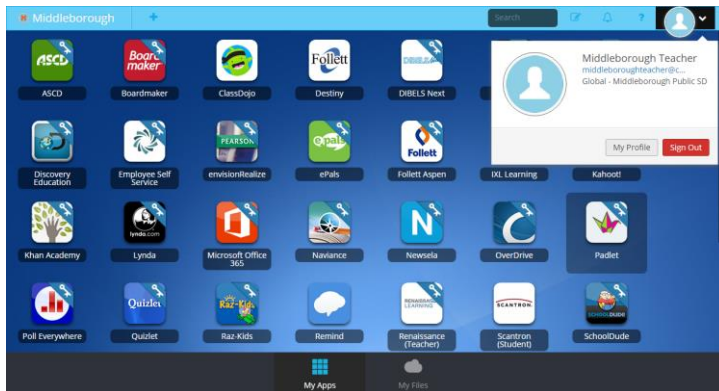
6. Cloud Drives

My Files > Manage Services > Connect allows you to connect other Cloud services in ClassLink to access all of your files in one location!



7. My Profile

Here is where you change your profile picture, themes & colors and access your password locker.



8. Online Help

Online Help is where you can find videos, screenshots and directions on how to use your ClassLink account. Click on the '?' on the top right of your screen and click on the green 'Online Help' button.

